



D'Israeli House

6 Bloomsbury Square

luxury office space in the heart of Bloomsbury

number 6

D'Israeli House is an important Grade II* listed building and a classical piece of London history. It incorporates the pleasing proportions of Georgian architecture with clean design, exquisite décor and all of the amenities required by the modern business. The building has five floors of office accommodation, each self-sufficient and fitted with dedicated facilities.

After crossing through the foyer, one is greeted by the main staircase, boasting three centuries of palpable history and a stunning floating design. Generous rooms create a serene backdrop for business and the opportunity to incorporate artwork into the workplace. Natural light pours in from large windows whilst the park provides the unrivalled London luxury of outside space.

As part of the renovation, D'Israeli House was equipped with a 21st century business Infrastructure. To learn more please see the specification list



heritage



Built in 1744, D'Israeli House is an historical treasure and one of the oldest surviving buildings on Bloomsbury Square. It was designed by the architect Henry Flitcroft and has now been comprehensively restored to preserve and accentuate its wealth of original features. The property remained a "superior town residence... adopted for the professional man" through the 1830s, with its most famous resident, Isaac D'Israeli, in residence from 1818-1829. D'Israeli was a noted writer and scholar and also the father of Benjamin Disraeli (the two-time Prime Minister). They resided together in the house during Benjamin Disraeli's teenage years.

In 1840 the house was converted to a medical facility and eventually the country's first orthopaedic hospital. It returned to residential use around 1860 and in the 1880s was home to the architect Edward Prior, one of the leading figures in Arts and Crafts Movement. Throughout the 20th century Disraeli House served as an office building.



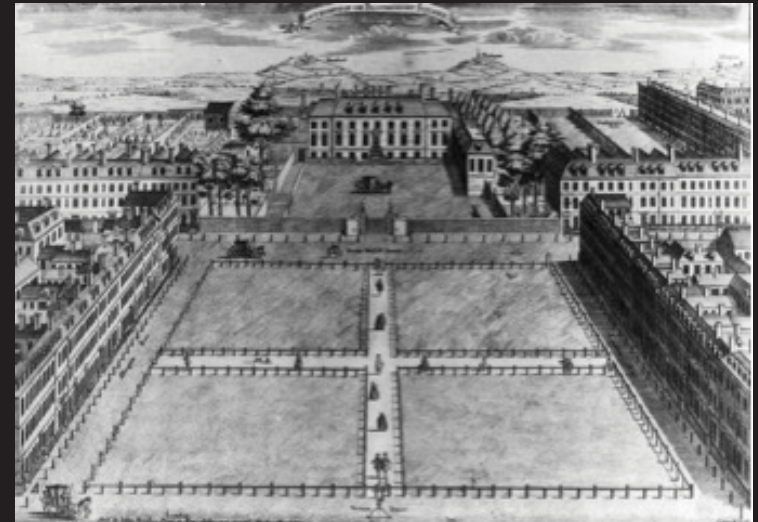
Benjamin D'Israeli



D'Israeli House 1913



Isaac D'Israeli



Bloomsbury Square 1746

location

D'Israeli House sits in the heart of Bloomsbury, one of the most vibrant and central parts of London. Home to world renowned institutions including the London School of Economics, British Museum, Gray's Inn and Royal Opera House, Bloomsbury has an evolved cultural and intellectual tradition going back centuries. This essence remains, and the square still connotes its rich history and diversity. Covent Garden and Soho, each with a myriad of world-class restaurants and entertainment options, are less than a 10 minute stroll away.

Bloomsbury Square is exceptionally well-placed for public transport with Mayfair, the City, Kings Cross St. Pancras International and Waterloo Station accessible in less than 15 minutes. There is also a car park under the square.

Key Locations

Cultural, Academic

1. The British Museum
2. The Architectural Association
3. University of London
4. Conway Hall
5. Sotheby's Institute of Art

Entertainment

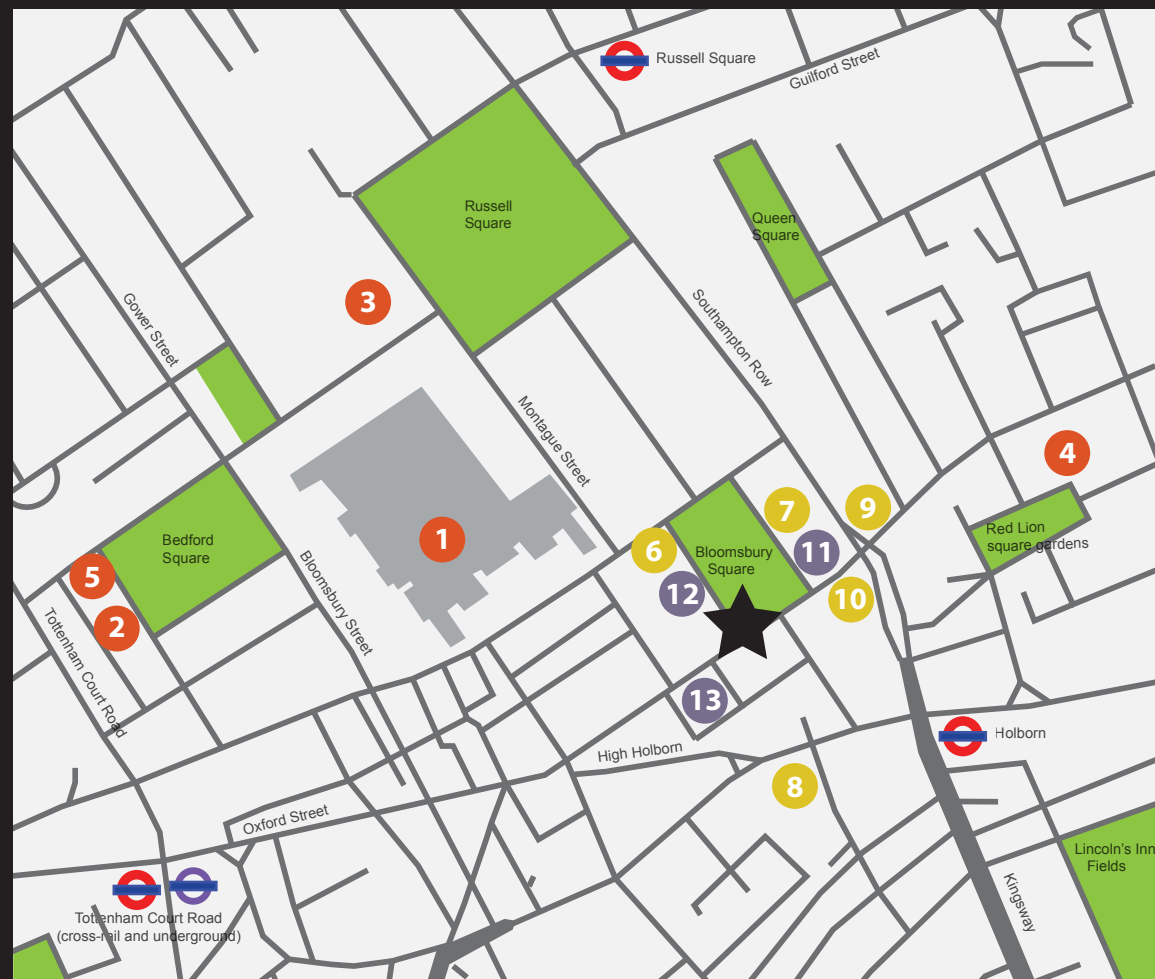
11. Royal London Hospital
12. Chartered Institute of Arbitrators
13. Bupa

Entertainment

6. Le Cordon Blue
7. Victoria House
8. Grange Hotel Holborn
9. The Hoxton
10. Sicilian Avenue



D'Israeli House



Journey Times

	car	train	bus	bicycle
Oxford Circus	14 min	8 min	16 min	6 min
Liverpool Street	19 min	14 min	40 min	15 min
Kings Cross	11 min	11 min	17 min	13 min
Heathrow Airport	46 min	56 min	-	-
City Airport	40 min	44 min	-	-

Indicative map. Average journey times taken from Google maps and TFL.



reception view : computer generated image (indicative spec)



first floor front office : computer generated image (indicative spec)

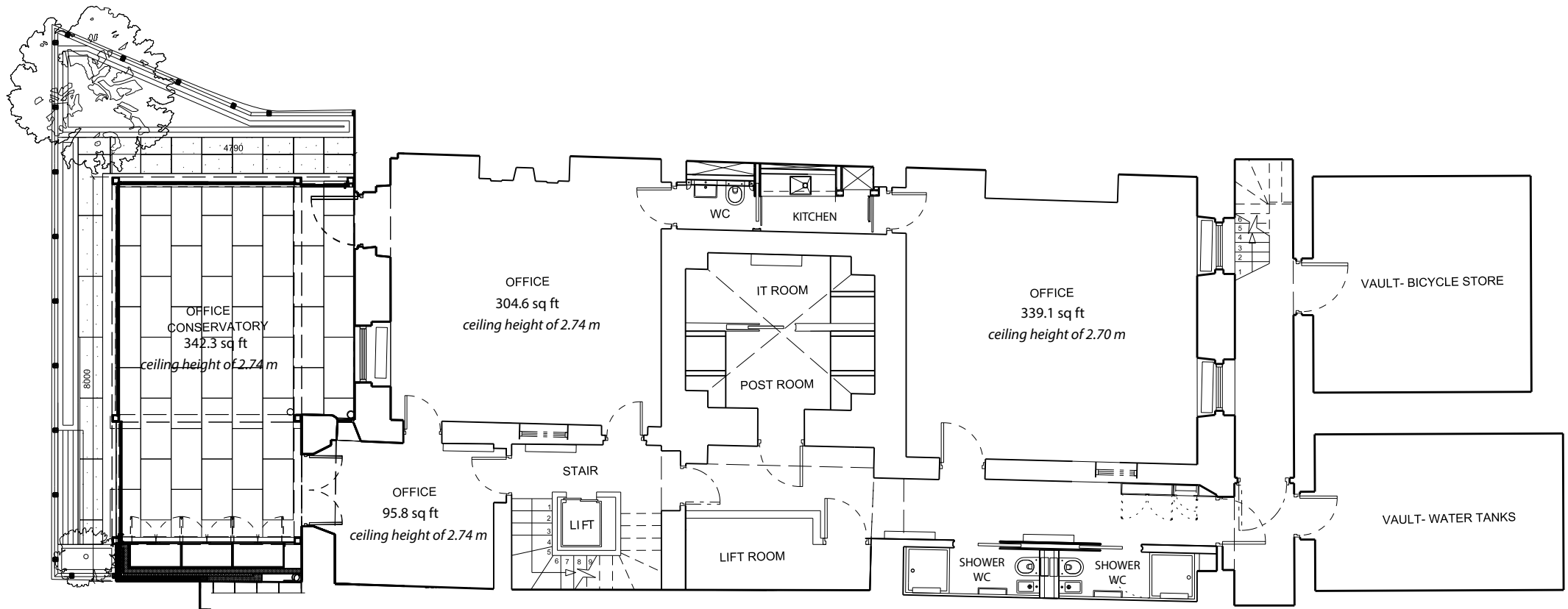


first floor back office : computer generated image (indicative spec)



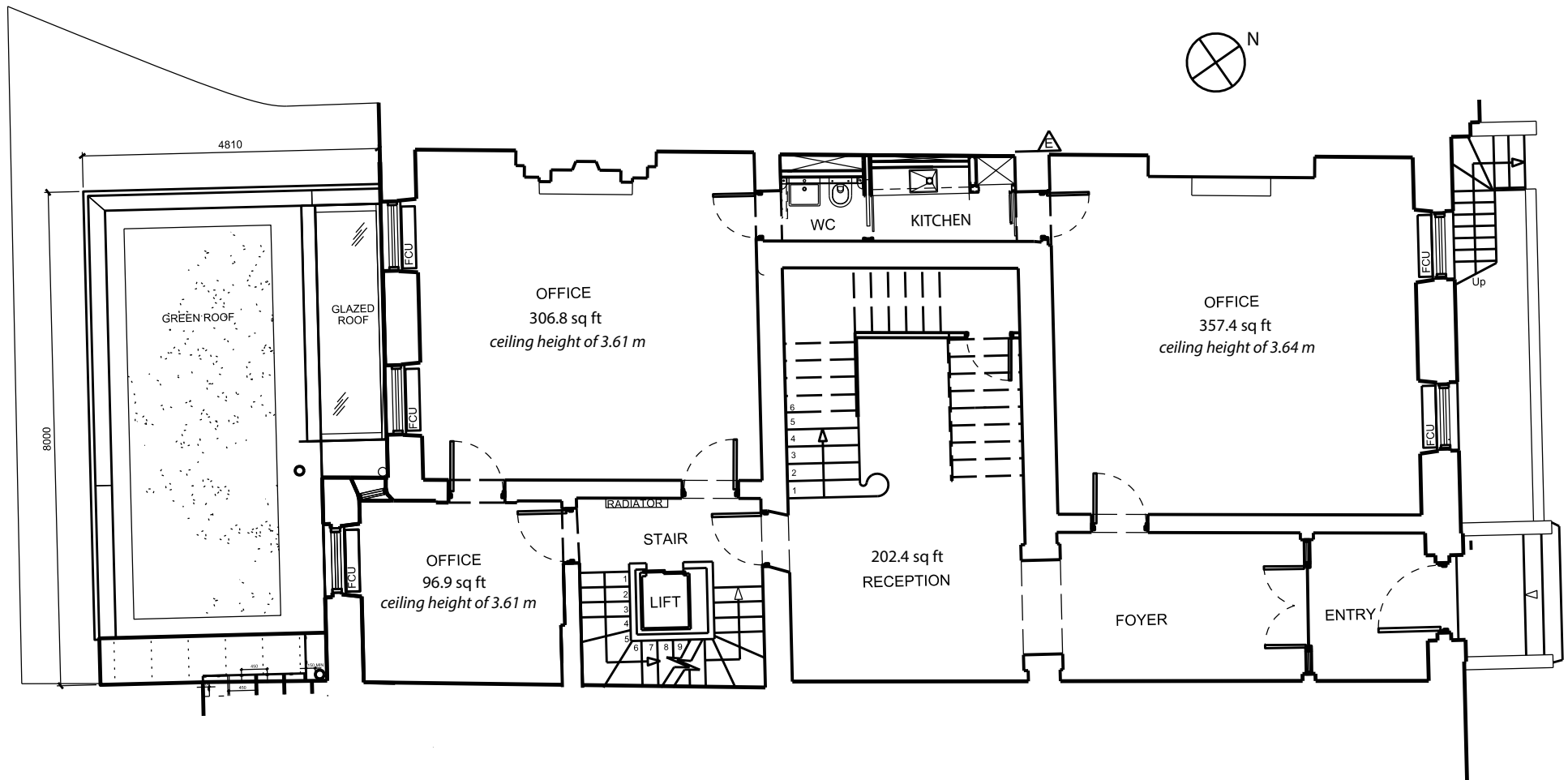
second floor front office : computer generated image (indicative spec)

basement



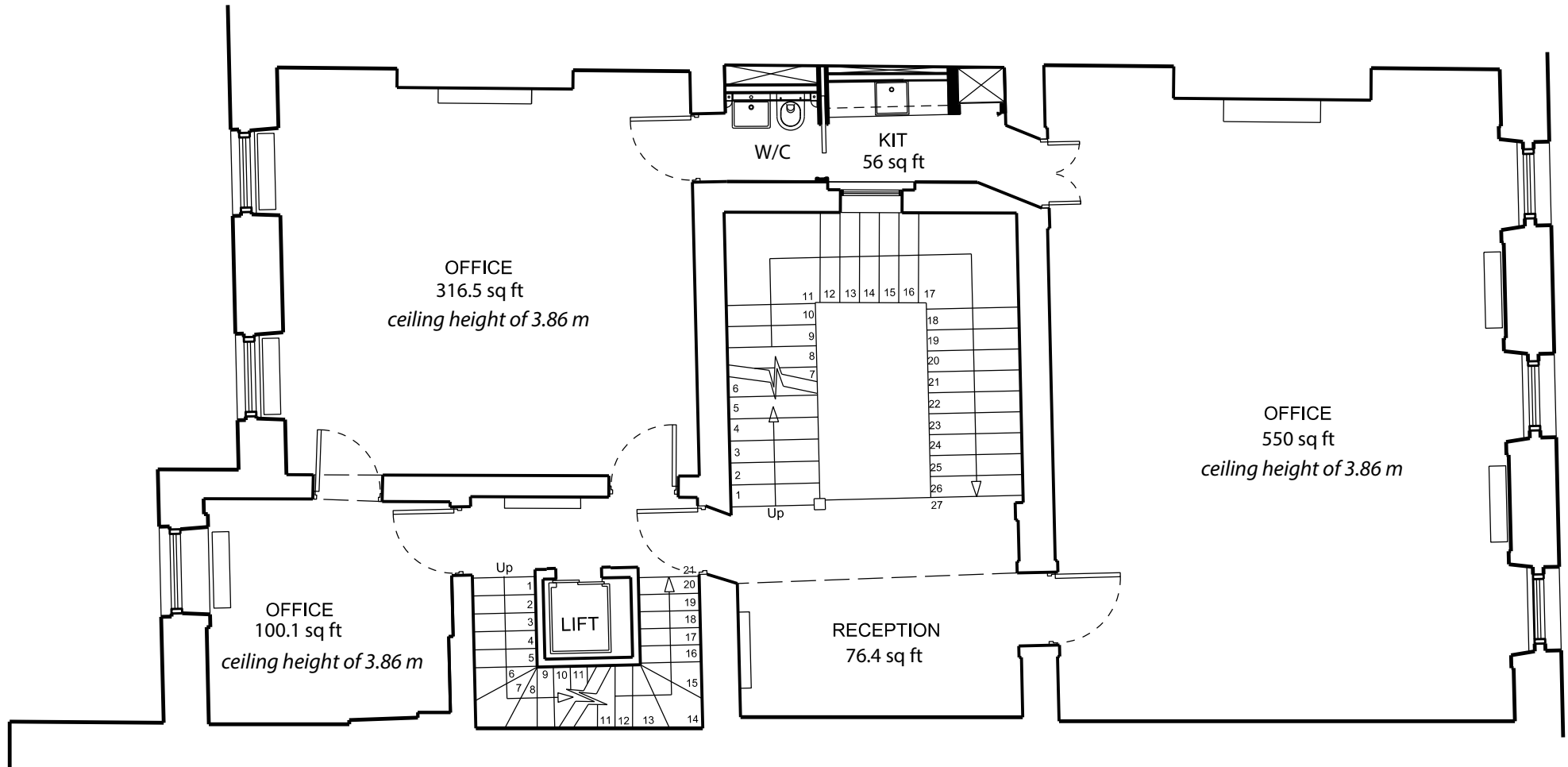
total size : 1,129.8 sq ft

ground floor



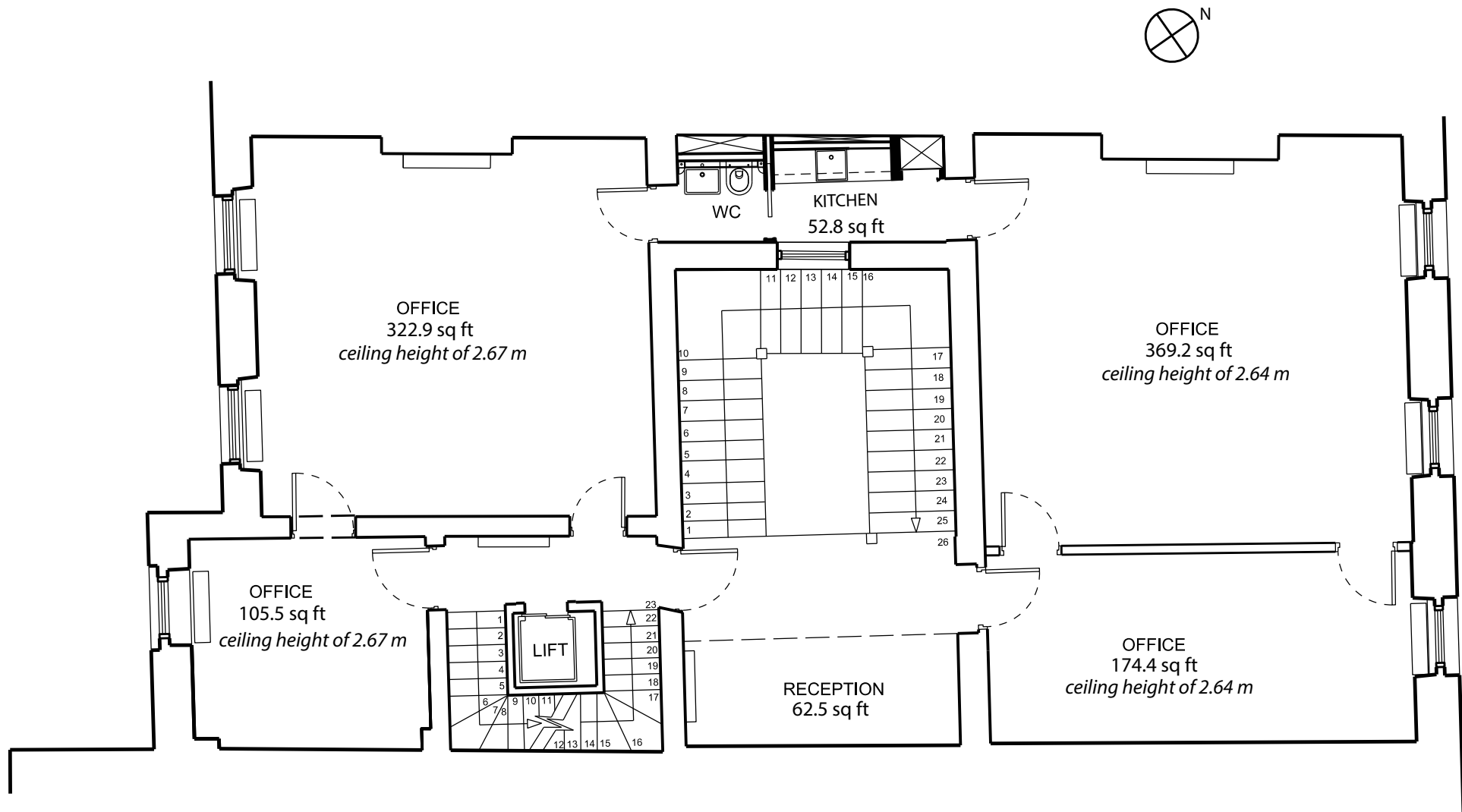
total size : 821 sq ft

first floor



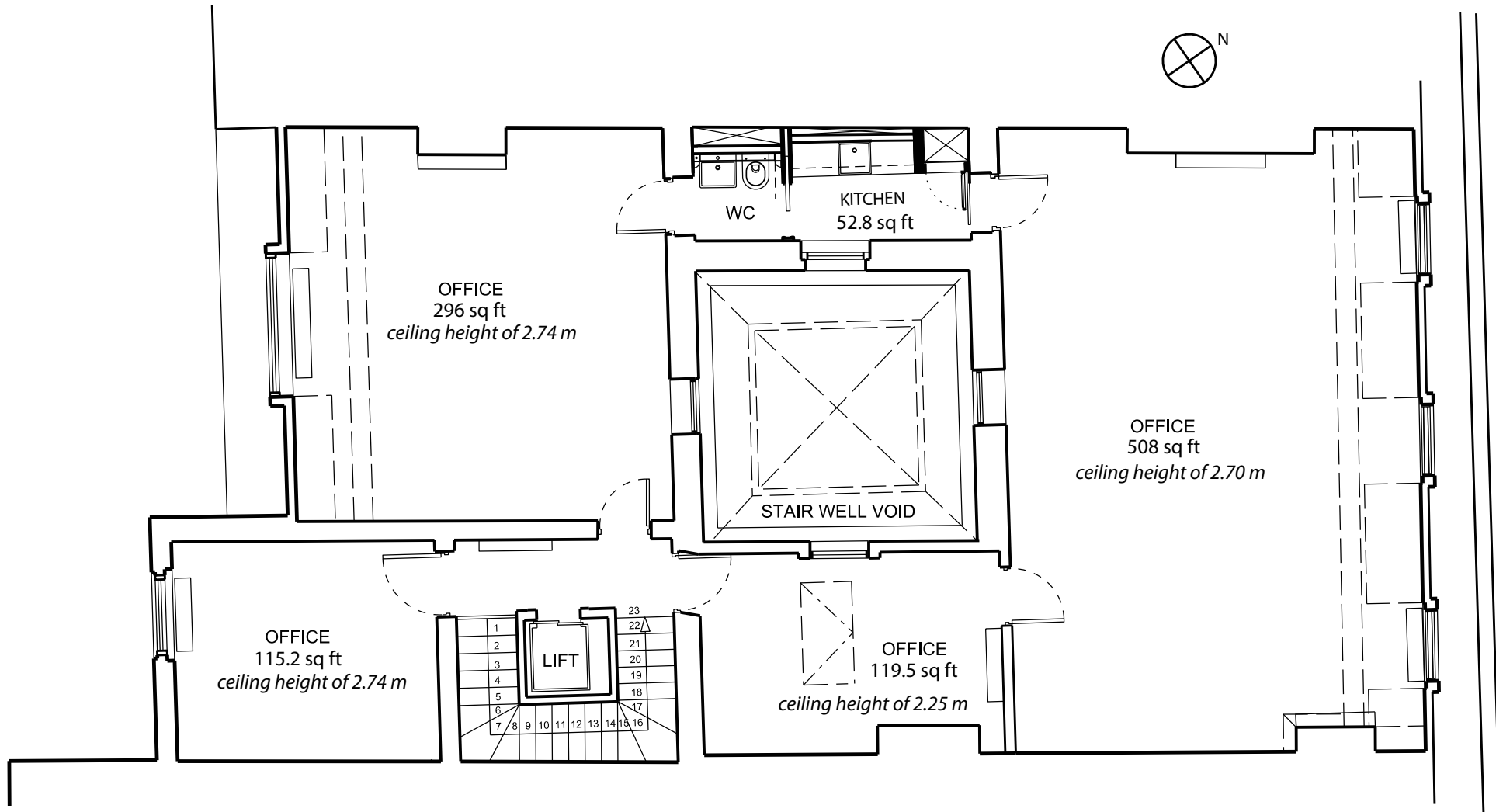
total size : 1,099 sq ft

second floor



total size : 1,087 sq ft

third floor



total size : 1,091 sq ft

contact

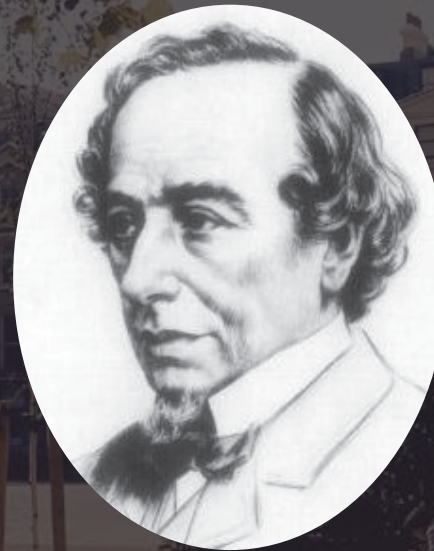
For prices and further information please contact ;

Elliot Simmons - Robert Irving Burns

+44 (0)20 7927 6339

elliott@rib.co.uk

www.rib.co.uk



www.disraelihouse.com

Misrepresentation Act – Allsop and Robert Irving Burns, for themselves and the vendor / lessor of this property give notice that these particulars do not form, or form part of, any offer or contract. They are intended to give fair description of the property and whilst every effort has been made to ensure their accuracy this cannot be guaranteed. Any intending tenant, lessee or purchaser must therefore satisfy themselves by inspection or otherwise. Paul Belchak & Co, nor any of their employees, has any authority to make or give any further representations or warranty whatsoever in relation to this property. All figures and measurements are approximate. The agents have not tested any of the services. 31/10/2015